

InTouch & System Platform 2017 Update 3 Overview

AVEVA™

Alarm Grid

"Live" camera feed

Key Takeaways



Most Secure System Platform version we've ever released!

- ▲ Encrypted communications eliminate threat of Man in the Middle
- ▲ Single Sign On (SSO) logon of users with OS Active Directory Integration



Increase Engineering Efficiency with OMI Data Driven Model

- ▲ Object Wizards graphics can directly be placed in panes
- ▲ External content linking (documents, videos, images, etc.) with assets and navigation items provide additional context



Increase Operator usability & user experience

- ▲ All OMI Apps enabled with multi-touch & gesture support
- ▲ InTouch Web Client is full featured browser ready with HTML5 graphics, alarms and trends

System Platform 2017

World's first Operations Management Interface (OMI)

Product Introduction

The operating system for the modern plant. The world's most prolific real-time control platform for Supervisory, SCADA, MES and IIoT application

Value Proposition

Our automation software provides as much as 40% increased efficiency in meeting changing business & market demands across industrial and manufacturing operations by eliminating the need for scripting, customization and leveraging reusable responsive HMI designs.

When it is Used

- Operations Management for hybrid, discrete, continuous manufacturing
- Need for standardization across multi-sites & plants
- Single Version of Truth – Centralized Information for Business Insights
- Running mission critical infrastructure with virtually zero downtime

How it is Used

- System of System. Unifies all essential system services into a single robust platform. Integrating multi-vendor systems and hardware
- Used to collect and analyze data with historians, intelligence and mobile reporting tools. Plug in MES, Batch & Workflow to streamline operation
- Enterprise wide visibility across Operational and Business organization
- An open and scalable foundation with centralized management to integrate and unify people, information, and processes with flexibility to rapidly adapt to business needs

3D Site Overview

InTouch OMI Navigation Tree

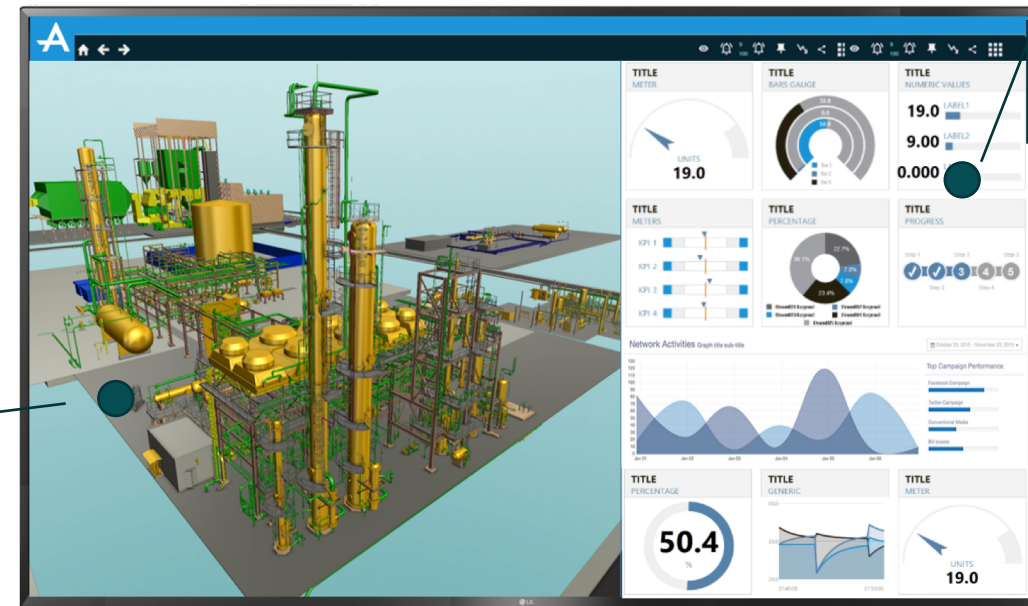
Live Process Graphics

Alarm Grid

"Live" camera feed

Operational KPIs
Status Indicators

1D and 2D
Viewers



System Platform 2017 Update 3

Expand OMI value, including Parity with InTouch HMI

New functionality

Parity functionality

Increased Engineering Efficiency

Object Wizards
Directly in Panes

Advanced Numeric
Formatting Support

Trend App Pen
Context

Connector and
Connection Points

Alarm App Area
Model

Alarm App Context
Sharing

Owning Object Multi-
Galaxy Reference

External Content
Linking

Improved User Experience/ Usability

Search Navigation
Model

ITAA OMI
Application Listing

Zoom-able Hotspots
on AA Graphics

Alarm Shelving &
Management

Touch Behaviors for
All Apps

IDE - Digital
Exchange
Integration

IT Compliance/ Hardened Security

TLS Encryption

Read-only OMI
ViewApps

License Server
Monitoring

Auto-Logout due
to inactive period

Non-Administrator
Network Account

Cross Galaxy IDE
Access

Single Sign On with
Active Directory

AVEVA

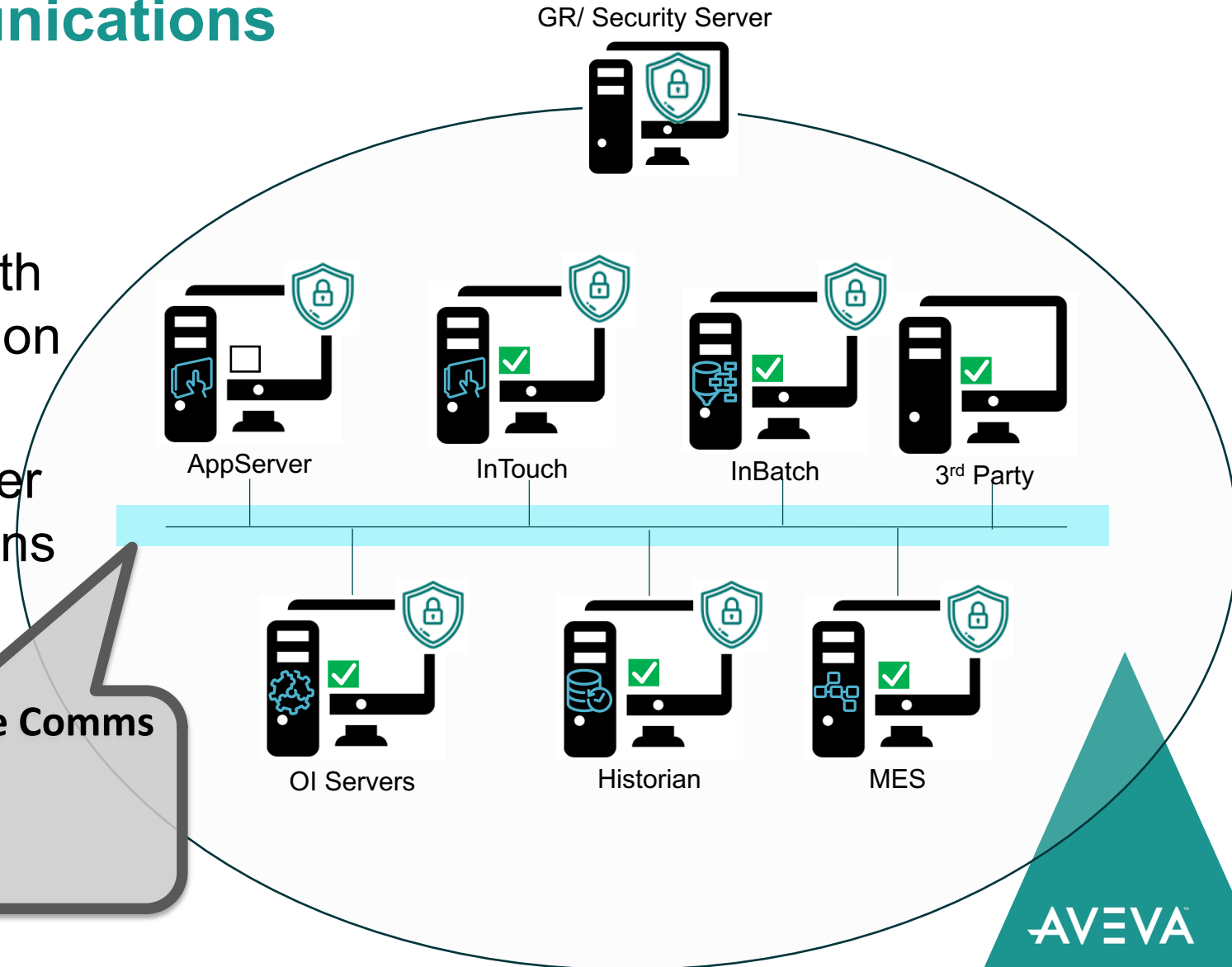
Enhanced cyber-security hardening to support cloud and mobile

Secure Encrypted Communications

- ▲ Eliminates Man in the Middle Threats
- ▲ Enhanced TLS 1.2 security with automatic certificates generation and distribution
- ▲ Encrypting external SQL Server database password connections
- ▲ Encrypts Global Data Cache

All Node-to-Node Comms

- SuiteLink
- MX
- iData



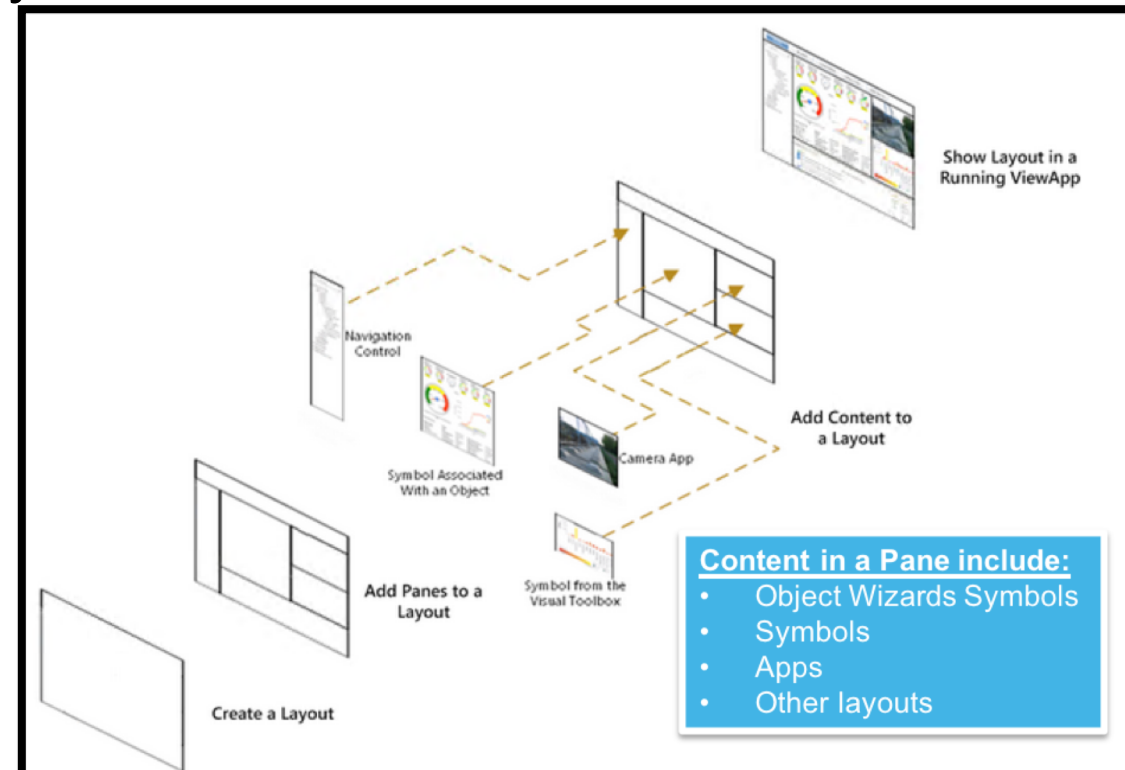
Object Wizards & Symbol Wizards

Addressing equipment variability required and enforcing standards

- ▲ Data driven approach extended eliminates need for scripting and heavy engineering effort
- ▲ Object Wizards Symbols can be used directly in OMI panes without embedding in overview graphic which simplified HMI engineering

Key Benefits:

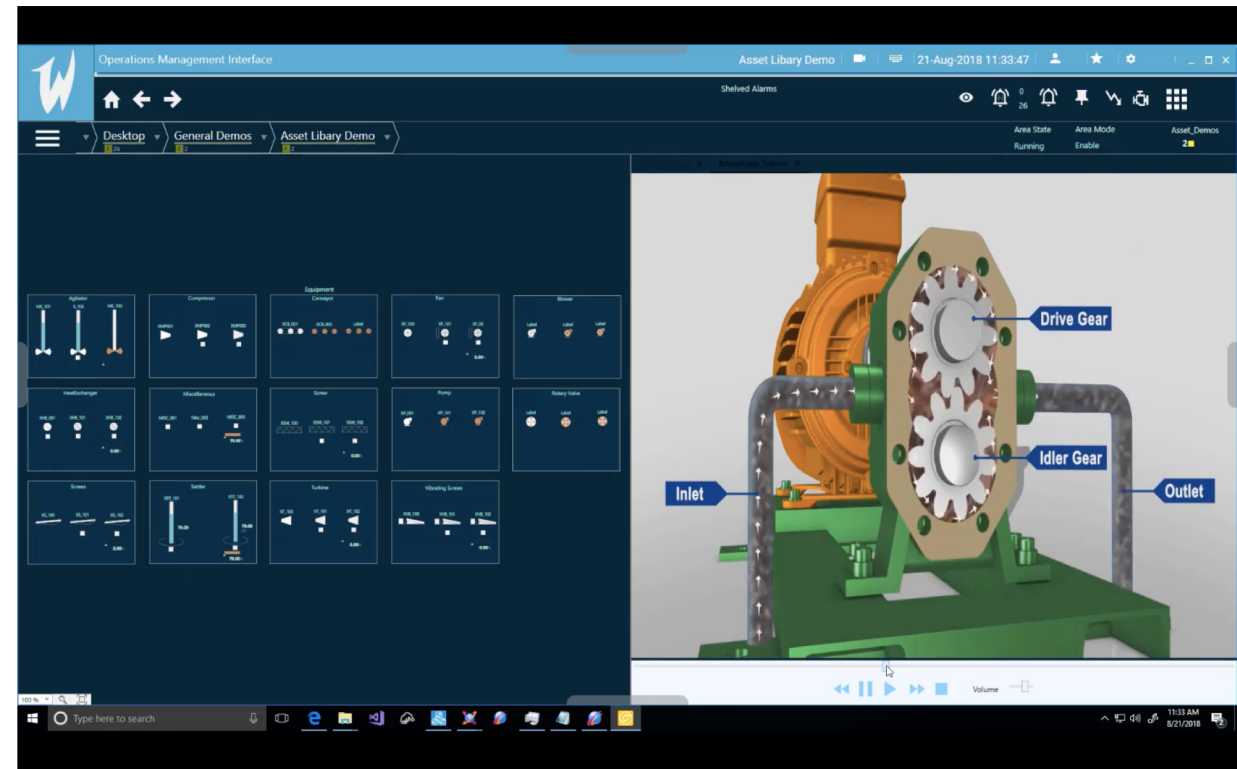
- Ease of Use: Simplified configuration lowers technical knowledge
- Scalability & Manageability: fewer number of templates to accommodate varying behavior/visualization of assets
- Standardization: driving consistency of assets across heterogeneous PLC/controllers vendors



Link External Content for richer Operational View

Increase Situational Awareness thru Contextual Information

- ▲ Enable linking external content (documents, videos, images, URLs) with assets and navigation model
- ▲ Operators, Field Workers can see standard operating procedures, 'how to' Videos
- ▲ Integrate existing OEMs HMI screens without re-engineering. Existing System Platform users can launch InTouch HMI displays within OMI



AVEVA Digital Exchange

Expanding the OMI Apps content to address IIoT



Discover the New OMI Apps that Enhance your System Platform 2017 Experience

Navigation Explorer Application - Natural Navigation Out of the B...	Recipe Management OMI App	Content Director Application - Ability for Adding Run-Time Conten...	Alarm App
Historical Trend App	Navigation Applications - Rich Navigation tools	j5 Wonderware System Platform InTouch Operations Management Inter...	GISize - GEOSpatial App for OMI
Longwatch ViewApp			

Extending your System Platform Run-time with Integrated Applications [See All](#)

GISize! Standard Infrastructure Management Interface for Wonderwa...	WIN-911 Alarm Notification Software	CX5 BACnet Schedule	j5 OPC Interface
DataHub Tunneller for OPC	DataHub OPC Logger	j5 Shift Handover	DataHub OPC Bridge
j5 Wonderware Historian Interface	AutoCoding Device Gateway	Alpana Dashboard - Dashboarding Capability Built for Wonderware	Dream Report

Extending your System Platform Engineering with Tools [See All](#)

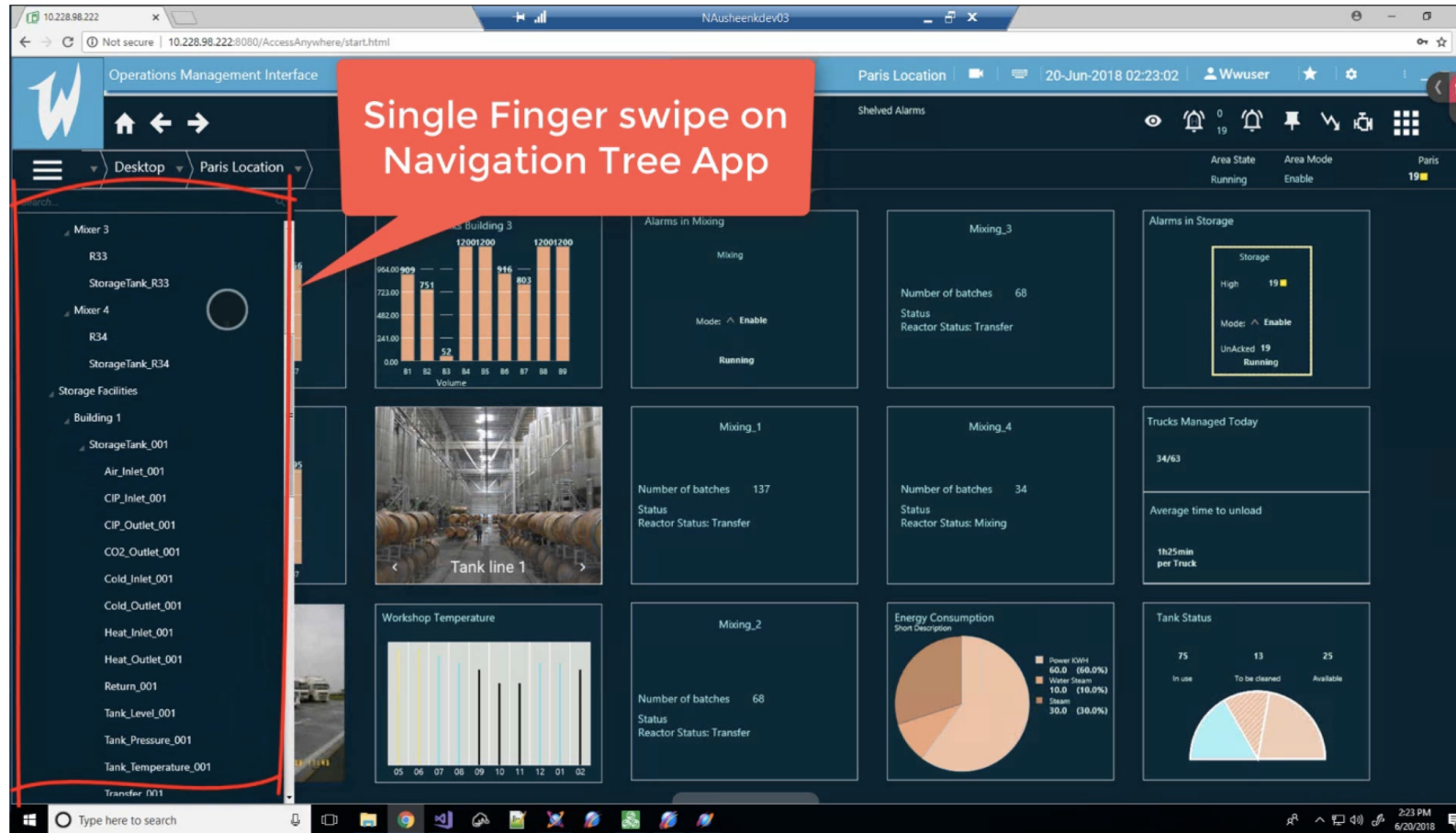
ENE Developer Tools	Galaxy Toolbox	Galaxy Object Manager	Control Configuration Manager
AutoSave for System Platform	CX5 BACnet Application Generator	CX5 BACnet Schedule	CX5 Json Device Integration
CX5 SNMP Explorer	Flexera Software Monetization Platform	j5 OPC Interface	DataHub Tunneller for OPC

COMING SOON

- Doc View App
- Video Player App

All Apps are Touch friendly

New SDK provides App Builders the power of Touch

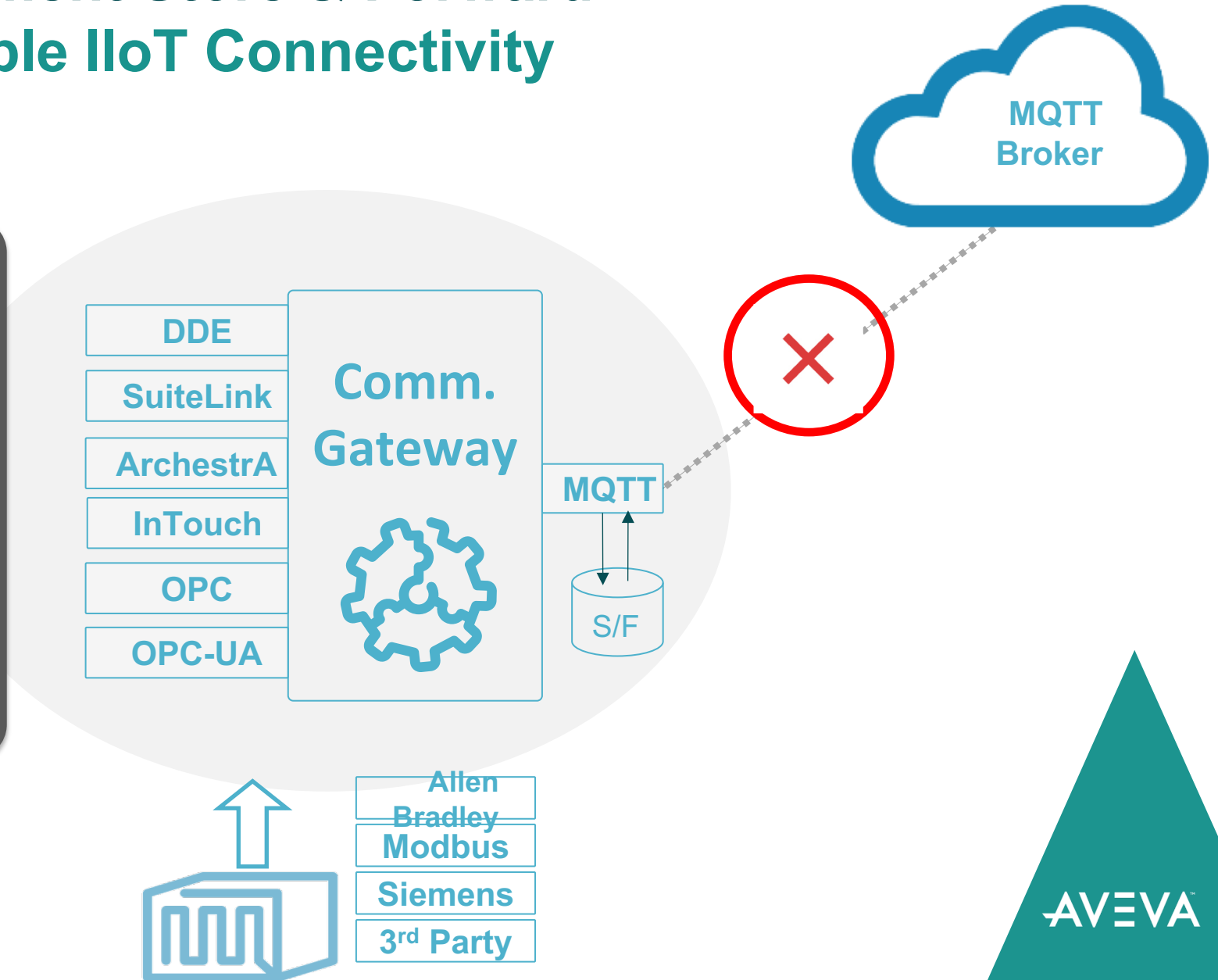


MQTT Plug-in Enhancement Store & Forward

Enabling robust & reliable IIoT Connectivity

MQTT Plug-in

- Simple connectivity to any MQTT Broker
- Security
 - Connection Security
 - Identity Authentication
- Data
 - Simple / Complex Payloads
 - JSON Payload format
- Publisher of Industry Standard Data Sources
- **Store/ Forward**



InTouch HMI 2017 Update 3



InTouch HMI 2017 Update 3

Expanding reach to the cloud and web

New functionality

Parity functionality



Engineering Efficiency

Cloud Integration
InSight Publisher

Hyperlink
Animation

Publish AAG to
Portals/Web pages

User Experience/ Usability

HTML5 Trend Client
(Web Client)

HTML5 Alarm Client
(Web Client)

Search Navigation
Tree
(Web Client)

Numeric Format
Styles

Alarm Border
Animation

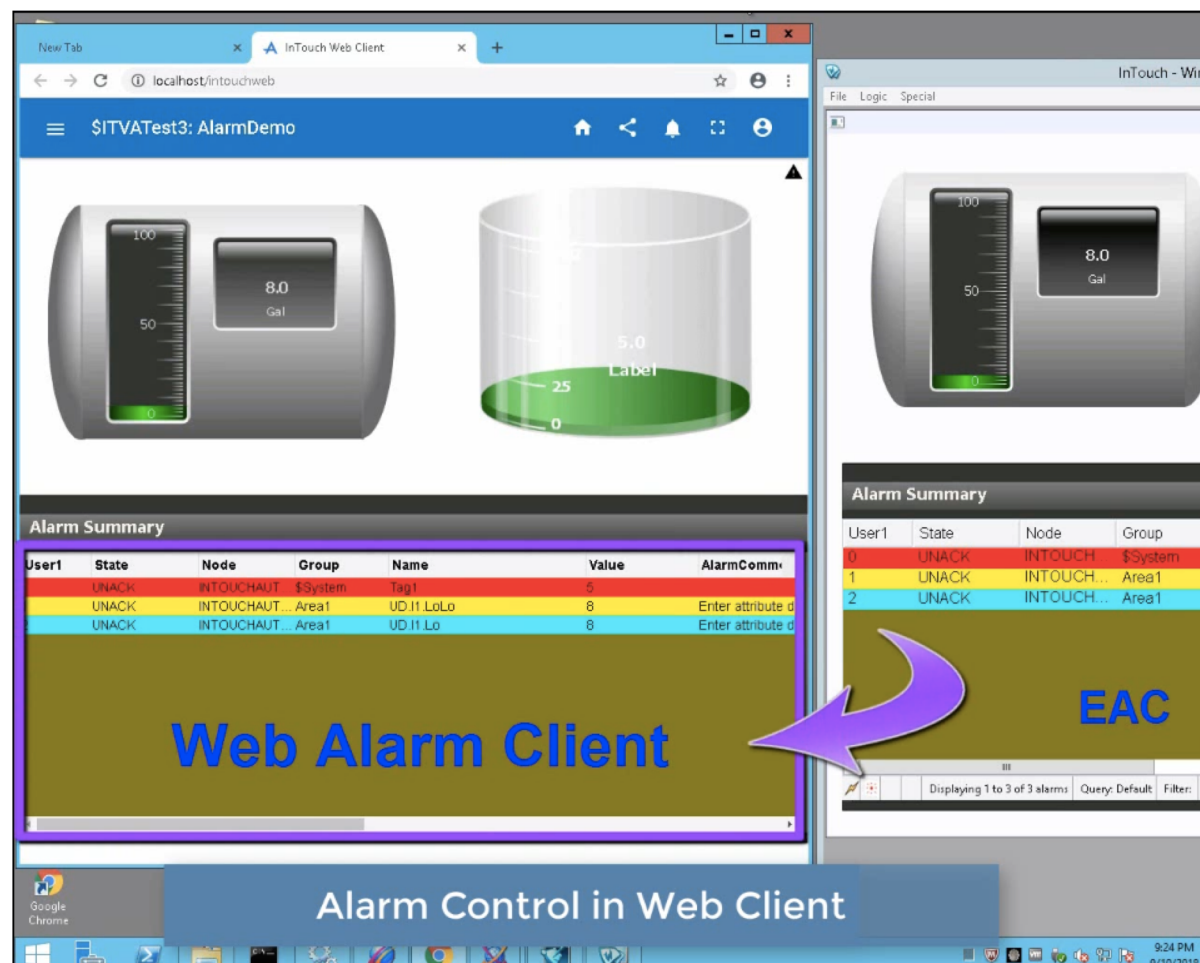
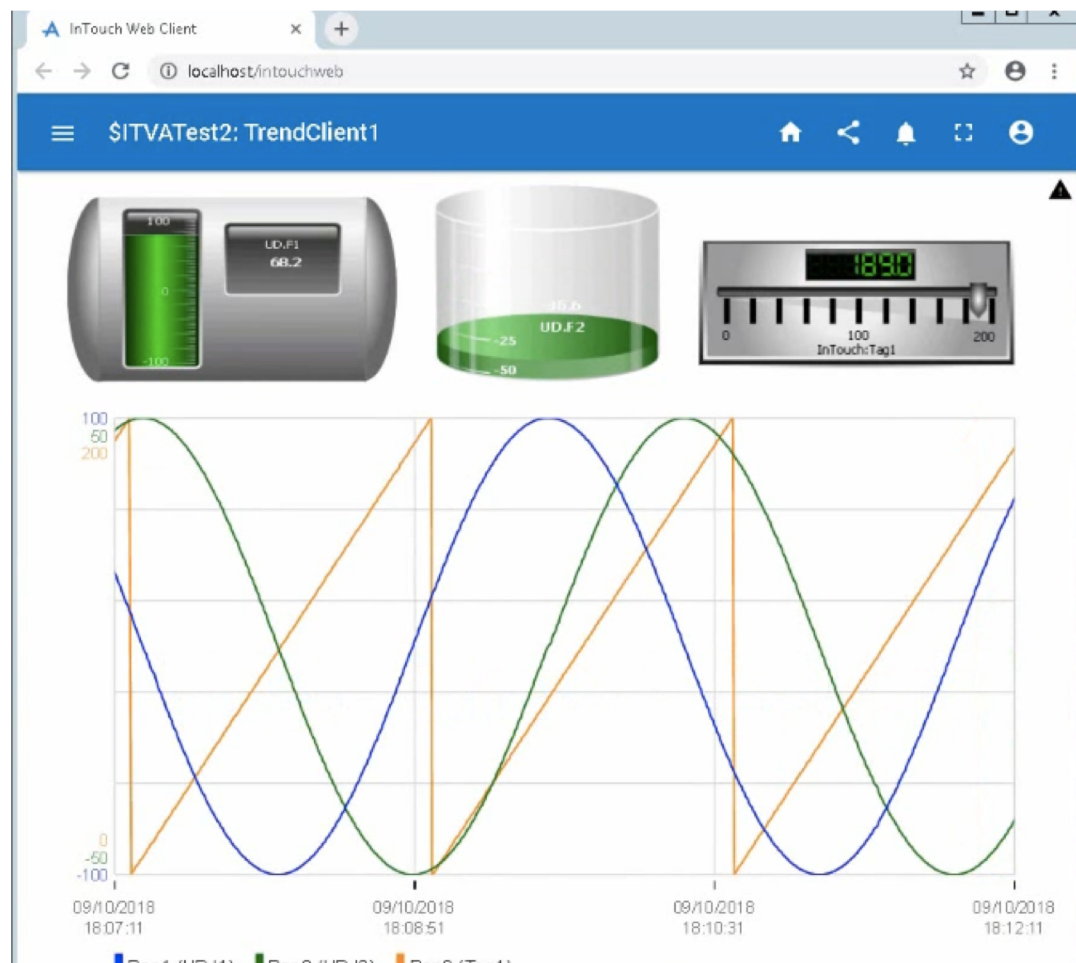
Connector and
Connection
points

IT Compliance/ Security

HTTPS
Support

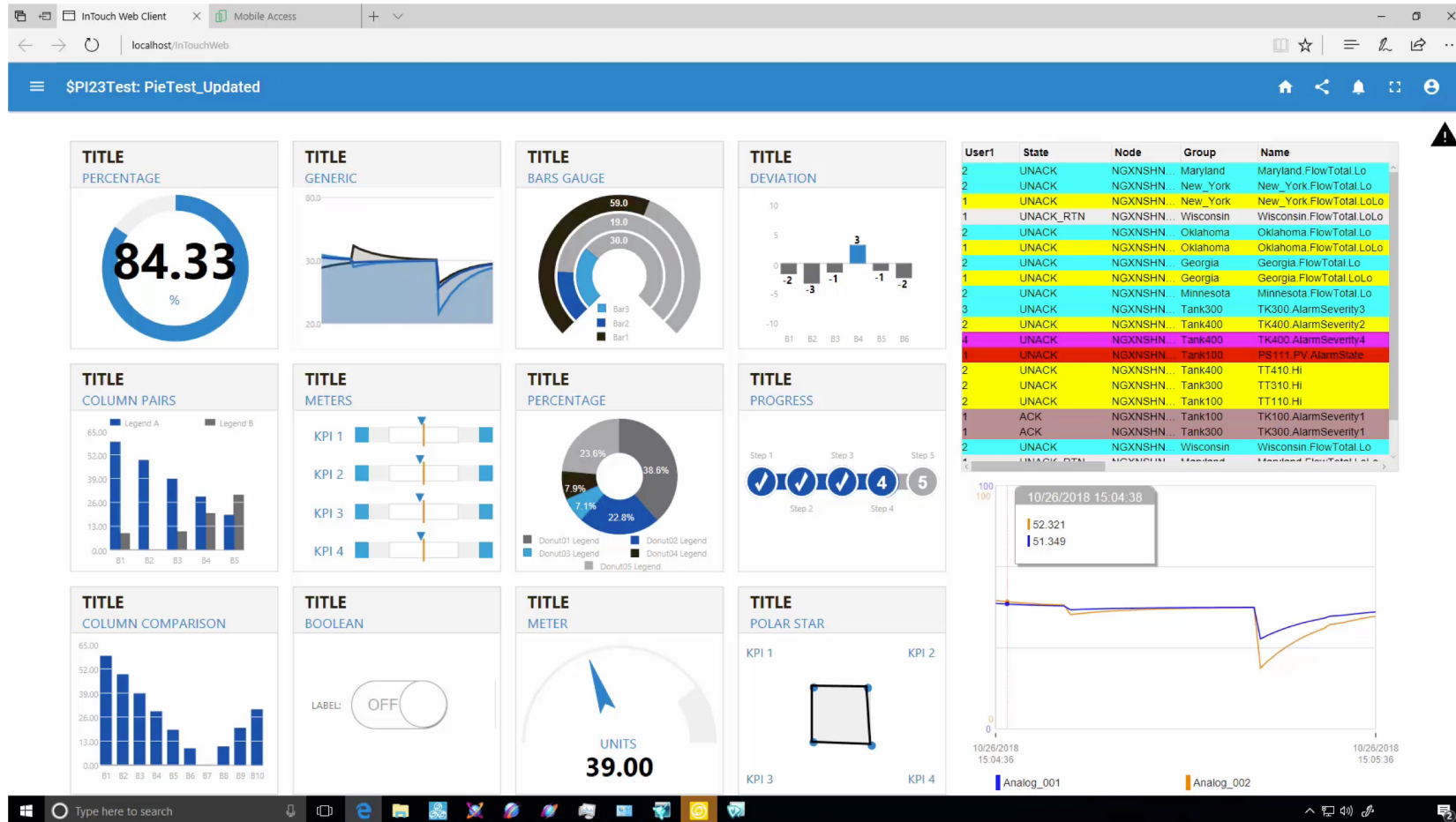
New HTML Alarm and Trend Client

Protect your engineering investments in InTouch



InTouch Web offers browser support for existing InTouch applications without any re-engineering

HTML5 Graphics, Alarms and Trend support



Previous Enhancements



InTouch HMI 2017 Update 2

Increased Engineering Efficiency

- QuickScript .NET functions are available for ArchestrA Graphics scripting
- Enhanced workflow for web client publishing enabling rapid iterative development & testing

Increased Usability of the Web Client

- Web Client supports comprehensive set of ArchestrA Graphics
- Web Client improved look and feel in full screen browser mode
- Web Client Improved display rendering performance
- Web Client support across all majors browsers (IE, Edge, Chrome, Safari)
- Web Client supports mobile devices (iOS and Android OS)
- Web Client supports pan & zoom across all major browsers

IT Compliance & Reliability

- Alarm DB Logger and related utilities support OS authentication in addition to SQL authentication
- Managed Applications do not require Admin privileges
- WindowViewer OS Shutdown Event Handling - enables activated license release when detecting the OS is ending a Remote Desktop session

System Platform 2017 Update 2

Engineering Efficiency

- OMI Live Preview
- ViewApp Namespace
- 'Show Content' API

User Experience & Usability

- Enhanced Navigation Tree with Search built-in
- Alias Names for Assets in the Navigation Model
- User defined navigation hierarchy

IT Compliance

- Ability to run Integrated Development Environment (IDE) no longer requires ADMIN privileges

in [linkedin.com/company/aveva](https://www.linkedin.com/company/aveva)
 [@avevagroup](https://twitter.com/avevagroup)

About AVEVA

AVEVA is a global leader in engineering and industrial software driving digital transformation across the entire asset and operational life cycle of capital-intensive industries.

The company's engineering, planning and operations, asset performance, and monitoring and control solutions deliver proven results to over 16,000 customers across the globe. Its customers are supported by the largest industrial software ecosystem, including 4,200 partners and 5,700 certified developers. AVEVA is headquartered in Cambridge, UK, with over 4,400 employees at 80 locations in over 40 countries.

[aveva.com](https://www.aveva.com)

The AVEVA logo is displayed in white, bold, sans-serif capital letters. The letter 'E' is stylized with three horizontal bars. A small trademark symbol (TM) is located at the top right of the letter 'A'. The logo is positioned on a large teal triangle that forms part of a mountain range graphic on the right side of the slide.