

The City of Boise's groundbreaking phosphorus removal facility removes 8,000 tons of wet solids from the Boise River every year, and it all operates on AVEVA's System Platform.

City of Boise – Dixie Drain

INDUSTRY
Water & Wastewater

Goals

- Standardize technology platforms used by City of Boise Public Works to optimize efficiency, reusability, operator training, costs.
- Comply with environmental regulations requiring a 98% reduction in the amount of phosphorous leaving the City of Boise's water treatment facilities.
- Protect the environmental integrity of the Boise and Snake Rivers.

Challenges

- Having different proprietary technology at different sites was difficult to support without centralized monitoring and control.
- EPA guidelines would otherwise require expensive facility modifications to meet water treatment requirements.
- Roughly 80 percent of water leaving the existing water treatment facilities is used downstream to irrigate agricultural fields, where it picks up more phosphorus before it drains into the Snake River.

AVEVA Solution

- System Platform
- Historian

Results

- The City of Boise is efficiently removing 50% more phosphorous from the Snake River than it would have if taking a traditional approach to waste water treatment.
- Dixie Drain removes up to 140 pounds of phosphorus per day, roughly 10 tons of phosphorus per year, and about 8,000 tons of wet solids per year from the Boise River
- For every pound of phosphorous not removed at a treatment facility in Boise, a pound and a half is removed downstream at Dixie Drain.
- For the same cost as upgrading facilities at the existing treatment plants, the new facility at Dixie Drain removes much more phosphorus from the Boise River, creating a lower cost per pound removed and a far greater environmental outcome.

A Groundbreaking Approach to Water Treatment in the City of Boise

Boise, Idaho – In 2016, the City of Boise commissioned a groundbreaking new phosphorus removal facility that will greatly reduce the amount of phosphorus entering the lower Boise and Snake rivers. Eight years in the making, the 49-acre Dixie Drain project, located between Notus and Parma, will greatly enhance water quality in the Boise and Snake rivers by removing up to 140 pounds of phosphorus per day, or roughly 10 tons each year. This innovative effort marked a first-of-its-kind collaboration between local, state and federal groups and agencies, and is held as a model for similar projects across the country.

“Essentially, Dixie Drain represents a new way of dealing with pollutant offset trading... For every pound of phosphorus not removed in the City of Boise, we actually remove a pound and a half of phosphorus at Dixie Drain.”

Colin Hickman, Communications Manager, City of Boise Public Works

The Economic and Environmental Challenges Faced by City of Boise

Roughly 80 percent of water that leaves the city of Boise's existing water treatment facilities is used downstream to irrigate agricultural fields, where it picks up more phosphorus before it drains into the Snake River. Meanwhile, federal regulations required the City of Boise to remove 98 percent of the phosphorus from the water leaving its treatment facilities.

With these new guidelines the City of Boise determined that it would be very expensive to comply with the removal rates for waste water processing. Since modification to the City's existing facilities would have been extraordinarily expensive and provided a diminished environmental return on investment, city engineers proposed building a new facility in the same watershed to remove more in volume than they were obligated to remove with typical sewage processing.

“The theory was, it was more efficient to build a new plant that can pull phosphorus from irrigation runoff... Being part of that project at one of the waste water plants in the city was a great experience to carry them forward from InTouch to System Platform and standardize their engineering architecture in a way that matched West Boise.”

Chris Raymes, System Integrator, Apex Manufacturing Solutions



Standardizing Technology Platforms Citywide Using AVEVA Solutions

Having different technology at different sites provided difficult to support, and having proprietary technology limited the resources available to support. That's why in 2013, the City of Boise decided to standardize its technology platforms and implementations to optimize efficiency, reusability, operator training, costs, and more. System Platform and Historian were selected for their process visualization and historization needs. In fact, the City of Boise Public Works leans heavily on System Platform to control both of its water/wastewater plants, support its public facilities, and supervise geothermal wells below ground that pump heat into government buildings.

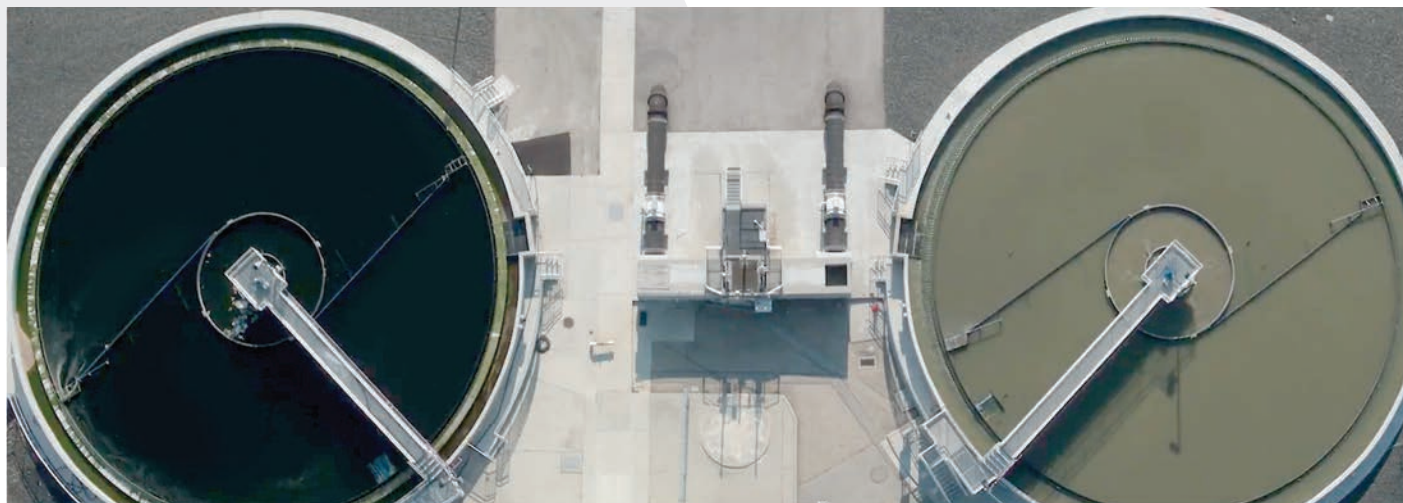
"We have the same programming across the board, and when we make a change, we can deploy it down to all the instances below... It's very handy from one place, we can log in and change any one of the sites over System Platform through that link. So it makes it very handy from an engineer's standpoint to maintain it."

Rich Taylor, Sr. Electrical Engineer, City of Boise

System Platform was deployed to provide visualization and control for the Dixie Drain phosphorous removal system. The coding standards developed by the city were also deployed to this new site to quickly bring Dixie Drain online.

From System Platform, reusable engineering standards ensured that the project was deployed quickly (no need to re-invent the wheel) and could be easily maintained by city engineers and technicians already familiar with operating standards. Moreover, the use of standards allows for technicians from any of the Boise sites to provide SCADA support at this new site. Especially helpful were the the object based programming and inheritance of templates, which made it easy to maintain and deploy standards for customers with multi-site facilities.

Also, data from Historian is used for reporting purposes. The net benefit was a cost savings to the city and better water quality for wildlife and recreationists. In fact, for the same cost as upgrading facilities at the existing treatment plants, the new facility at Dixie Drain removes much more phosphorus from the Boise River, creating a lower cost per pound removed and a far greater environmental outcome.



Going Above and Beyond with Environmental Return on Investment

While this project was sparked as a compliance effort to meet EPA and DEQ requirements for phosphorous removal from treated water entering the Boise river, this solution enables the City of Boise to more efficiently remove 50% more phosphorous from the Snake River than it would have by using a traditional approach to waste water treatment—resulting in better water quality.

The flow and phosphorus concentration at Dixie Drain are measured at both the inlet and outlet, where operators record the pounds entering and leaving the facility. The bound phosphorus material will then be dredged and dried at Dixie Drain.

Essentially, for every pound that is not removed at a treatment facility in Boise, a pound and a half is removed downstream at Dixie Drain. By treating both upstream in Boise, and downstream at Dixie Drain, the overall benefit to the river system is greatly improved.

“At it's heart what Dixie Drain is – it's a better environmental return on investment for getting phosphorus out of the river and ultimately ending up with a cleaner Boise River and cleaner Snake River”

Colin Hickman, Communications
Manager, City of Boise Public Works



About AVEVA

AVEVA is a global leader in engineering and industrial software driving digital transformation across the entire asset and operational life cycle of capital-intensive industries. The company's engineering, planning and operations, asset performance, and monitoring and control solutions deliver proven results to over 16,000 customers across the globe. Its customers are supported by the largest industrial software ecosystem, including 4,200 partners and 5,700 certified developers. AVEVA is headquartered in Cambridge, UK, with over 4,400 employees at 80 locations in over 40 countries.

AVEVA believes the information in this publication is correct as of its publication date. As part of continued product development, such information is subject to change without prior notice and is related to the current software release. AVEVA is not responsible for any inadvertent errors. All product names mentioned are the trademarks of their respective holders. Copyright © 2019 AVEVA Group plc and its subsidiaries. All rights reserved.



@avevagroup



linkedin.com/company/aveva

aveva.com